

EUREKA EXPRESS

VOL XXXII No. 4 CIRC 286

MAY 2011

**BREAKING
BARRIERS TO
PRODUCTIVITY**



SPONSORED BY



Fieldays®

15-18 June 2011



Childhood Memories

I switched on the heat pump the other night, and, as I thought about what to write for this editorial, I started thinking about when I was a child in Eureka – getting the wood for the fire, lighting it, waiting for it to warm the room, enjoying the crackle and blaze. There is something special about wet winter nights as a child and the memories they create.

It seems such a short time ago when Guy and I were the children. How things change so quickly. Now we are the ones with the children and we are helping create their childhood.

Biking was the main mode of transport for many who attended Eureka Primary. Biking along on frosty mornings with our breath producing little cloud puffs – our frozen fingers covered with gloves. Stopping along the way to check for ice on the pot holes _on the side of the road and looking for the largest spider webs linking blades of grass. It was the excitement of the adventure to get to school and the chatter of all that had happened the day before and what was to be continued that day. Now we take the children in comfort, in a heated car, but some things are not so different. The kids still excitedly chatter about what they are going to do or what they have done during the day.

Our childhood adventures largely tended to focus around home. Looking for ducklings or frogs, playing on our bikes around the drive way, collecting camellia flowers, picking blueberries. Our children certainly have some of this. There are the fruit trees which are now mature enough for the children to climb and pick the fruit. The pet lambs and pig to care for. Tomatoes in the vege garden to raid, grapes on the vines. But we also often travel wider for adventures. Easter was spent at Rotorua, our son Toms favourite holiday location. Unlimited swimming in the hot pools, playing at the park on Rotoruas lake edge, riding bikes around the camp, and all squashed very happily in nani's caravan. A strong favourite place to visit is the Paradise Valley Lion Park.

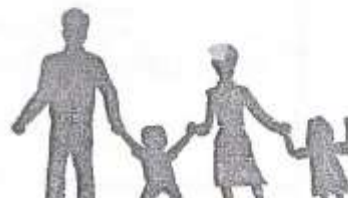
Even when wet, windy and miserable, an out of town adventure quickly passes an otherwise bleak day as it did last Sunday. Guy had to be away for work so Nani, the kids and I hopped into the car. Our first stop was to Mcdonalds in Otorohanga where the kids played happily on the playground provided, while the clouds emptied further. Quite a few other families had the same ideal. The adventure continued when the rain cleared and we visited the Otorohanga kiwi house and managed to arrive at feeding time. Great fun for the kids to watch the kiwi running up and down the sides of the glass, waiting for the food. Even though it is quite a small place, it really is worth a visit. A bush track investigated and a leaf fight later we were all back in the car ... faces smiling and that wee memory bank enriched further.



A trip down to Wellington for the winter carnival fireworks is scheduled for September, the snow in August, and our first tramp in November at the National Park is on the calendar to do list.

Watching their faces as we enjoy these adventures with them makes me realise that children's childhoods are full of excitement and opportunities. And already we are realising that this time is going to pass too quickly.

Guy and Anna Irvine





SNIPPETS

WEDDING CONGRATULATIONS to **Thomas Hill and Belinda Milow** (on Troy and Michele Hinton-Bosch's farm) who married in Tauranga on April 30th. Every best wish for your future happiness.

RUBY WEDDING CONGRATULATIONS to **Nick and Maria Stolwyk** of Hooper Road who celebrated 40 years of married life on May 22nd. Every best wish for many more good years together.

GOLDEN WEDDING CONGRATULATIONS to **Mike and Joy Stokes** of Eureka Road who will clock up 50 years of married life on June 10th. Happy celebrating and all good wishes for many more good years.

SPORTING SUCCESS. Promising young athlete **Tyla Johnson** represented Waikato / Bay of Plenty in the NZ Inter provincial athletic championships held in Inglewood over Easter. In the points based competition the Waikato / BOP team finished 4th overall out of 11 provinces. Tyla came 1st in her 400 metres heat and 2nd in her 800 metres heat gaining 2375 points for her team. Great running, Tyla.

MOVING ON

The Johnson family of 1569 Tauwhare Road have sold their home and are moving back in to Hamilton. Ken and Rhonda and their three children Zane 20, Nathan 17 and Tyla 14 have lived in Eureka for eight years with Nathan and Tyla having grown up through the local school system of Tauwhare Primary, Berkley Intermediate and currently Hillcrest High School, all top quality schools for Eureka based families.

Ken, who manages Eureka Orchard for Sunfruit Orchards Ltd, has been there for 12 years and will continue to manage the orchard. Rhonda works at the Fonterra plant on Foreman Road, Te Rapa. With children who are getting older future employment opportunities are the main reasons for moving in to the city. We have enjoyed our time in Eureka, lived the lifestyle block life and now it is time to get back closer to the shops!! All the best - Ken, Rhonda and family'

*DEEPEST SYMPATHY is extended to
Jeanette Broome, Paul and Carey and all the family
on the death of Jack on May 24th.*

A dearly loved father, father in law and grandad, Jack made Eureka his home for some 34 years until ill health forced him in to care four years ago. Our thoughts are with you all at this sad time.

**Sincere condolences are extended to
Greg, Julie, Mark and Brendan Purdy of Friedlander Road on the death
of Greg's mother,
Mrs Effie Purdy of Hamilton on 4th May.**

FAREWELLS

Another year has sped by and sadly it is that time of year again when we must bid farewell to farming folk who are moving onwards and upwards with their lives and careers. Our good wishes go with you all for a bright and prosperous future and we trust you all leave with fond memories of your time in Eureka.

- On Waverley Road it is farewell to **Stephan Barnard** who is leaving the Gordon farm and heading to Te Awamutu
- Moving on down to Eureka Road where it is goodbye to **Mike Jones** who has sold his farm after nine years and is moving back Taupiri way. Leaving with Mike are **Karen Coleman and her boys** including little Marshall. Our good wishes go with you all.
- The new owners of the Jones' farm are next door neighbours **Peter Scatchard and Fiona Hastie**.
- Over to Schollum Road where changes are happening, **Paul and Donna Hinton** have sold their farm and are moving to Mt Maunganui for a break before deciding on their next move. Paul has spent all his life on the farm in Eureka, being the third generation Hintons to farm the property, so it will be a huge change for him. He was raised and schooled in Eureka as were his own children. Our best wishes go with you also.
- The new owner of Paul and Donna Hinton's farm, **Mrs Shirley Morrison**, next door on cnr of Schollum Rd and SH26, has sold her previous Schollum Road farm to neighbours Brian and Donna Verryt, and her sharemilkers **Steve and Lisa Meek** are moving up the road to the new farm.
- Changes are also happening along Morrinsville Road. **Troy and Michele Hinton-Bosch**, fifth generation Hintons to farm the property, have sold their farm and are off down south to farm at Ashburton. Troy grew up in Eureka and with Michele returned to the family farm in Eureka in 2003. They have raised their three children, **Antony, Kiri and Sam** here. Our good wishes go with you all in your big move south.
- Also departing the Hinton-Bosch farm are newlyweds **Thomas Hill and Belinda Millow** who are off to Whitehall. Every best wish to you both for the future.
- Next door, on the Eureka side, changes are afoot on **Caroline and Gary Tims'** farm. **Son Peter and daughter Sheryl Forbes**, who both reside on Hinton Road, will be sharemilking and managing the farm and Peter's boys **Shaun and David** will be living in the farm cottage.
- Leaving the Tims farm after three years are **Cory and Meg Osborne** who have a new position at Piako.
- Also on Morrinsville Road, on Ana Duncan's farm, it is farewell to **Dave Moodie** who is heading to Horsham Downs.
- For the **Johnson family** of Tauwhare Road please see 'Snippets'.

You are all wished every success in your new ventures

Tauwhare School

Haukapāpāhi 2017 New Zealand
administration.school.nz
07 534 0594



Roll: 136

It is only day 1 of week 4 and already our calendar is full to overflowing with exciting opportunities and events for our children.

ENVIRO GROUP

Our enviro group has been working hard all year planning changes to our car park to make it safer, and to accommodate roll growth for us and for the pre-school.

Together with the Waikato District Council they have come up with a very workable plan – all we need now is funding. Hopefully we will be able to access some grants from the council and the Ministry of Education.

The children are also designing their Care Code which will be displayed in the gardens.

A trip to Mr Woodcock's farm to collect sheep manure was a huge success – lots of manure and lots of learning!! Thank you so much to Mr Woodcock for his patience, and willingness to explain the shearing process to many of our children who had never been in a shearing shed before. Thank you also to Graham Mayall for bringing his tractor to transport the manure. Our vegetable gardens will surely grow a bumper crop this year!

Last week Mrs Cook and her enviro students attended a National Young Leaders Day in Rotorua featuring speakers from NZ and overseas who gave inspirational messages to the students:

"T.R.Y = Truth, Respect, You (you first - always choose what you think is right even if you are standing on your own).

Learn from your mistakes.

Jamie Fitzgerald said "Never give up. Even when you think you are making the least progress you are often making the most" Reported (but heavily edited as they recounted so many wonderful anecdotes) by Jack Morton & Cameron Bargh.

SPORTS

We are very fortunate to have the support of Sports Energise and Kiwi Sport who come to school to help the children get a taste of many different sports. We have had training sessions in Turbo-Touch, Hockey (with Cathryn Findlayson from the Black Sticks) Basketball, Ball Skills and Tennis.

Because the children loved the tennis session we decided to invest further in this area and purchased 3 class sets of junior tennis rackets and balls, moveable tennis nets and expert coaching 4 times a year for the next 3 years. To help off-set these costs we are having a special Sports Disco on Thursday night where everyone comes dressed as their favourite sports star.

The 3 rugby teams look very smart in their new sports uniforms!

Room 1 children earned a class outing and chose to go to the Rock Climbing centre in Hamilton. They had a fabulous time and discovered new skills.

ANCHOR MILK BAR CODES

Thanks to so many people logging onto this site and registering our school we are now coming 7TH IN New Zealand!!! Thank you to Churchills Café & Restaurant in Te Awamutu for collecting so many for us, also The Deli in Cambridge. I know some of our parents are collecting bar codes from their work places also.

Remember all you have to do is text or log on and enter the code on the anchor website and nominate Tauwhare School. You go into the draw each day for \$2500 and so does the school. There is a big prize of \$50,000 for you and for the school! Get as many cafes and offices to support us.

We are happy to log codes in also so stick them on a piece of paper and send them to school.



We have had a very busy term so far with many fabulous learning opportunities taking place. Last week the whole school took a visit to the Hamilton Zoo coinciding with our Biodiversity Concept Study. We had a fabulous day and the children took home many interesting facts about animals. We hope to be able to share some photos and stories with you in the next edition

Historical Plaques:

The school has a rich history dating back to when it opened in 1890. A Captain Runciman, owner of the Marshmeadows Estate, donated 20 acres of land for a school and he was instrumental in having a building erected.

We have named the Learning Needs room to recognise the significance of his gesture.

In 1990, the school celebrated its centennial. The organising committee erected a wall to create a library courtyard. The association of several early settler families to Newstead School was indicated by plaques located along this wall. As the layout of the school environment has changed, earlier this year the wall was taken down. Brent Whiting generously gave of his time recently to relocate the plaques on the wall beside the office entrance. This has become a striking feature and effectively keeps to the fore the contributions of pioneer families.

There are several other areas of historical interest in the playground.

The swimming pool area:

- Scott Ferguson Memorial Tree
- Hamilton City Centennial Tree
- A tree planted by W H Baker
- Jubilee Reunion (1890 – 1950) tree planted by A J Davison

By the adventure playground:

- Derryn and Larry Ferguson Memorial Trees
- Davison Memorial Tree

We are fortunate to have historical links to the district and the families feature in this way. Do spend a bit of time when visiting to view these features of significance.

Book this into your diary it's the next major social event!





Pukeko Preschool, Tauwhare

"Quality early childhood education for 2-5 year olds in a caring rural environment"

With the changing seasons Pukeko Preschoolers have been enjoying some lovely autumn activities. During our walks around the school grounds we've collected an assortment of leaves and acorns which inspire some great craft creations. We continue to visit the school library each week.

We have recently had a great catchy, informative brochure produced about Pukeko Preschool. Should you want one, or know of anyone who may like to know more about us whom you could pass one onto, please collect one from the preschool, Tauwhare School office, or phone us on 824 0199.

Finally an important date to note in your diaries now - **FRIDAY JULY 8th, will be the TAUWHARE WINTER FAIR.** We have hosted this fun evening over the past two years as our major fundraiser, and do appreciate fabulous support from the greater community. Keep the date free to come along to the **Tauwhare Hall** for some novel fair bargains or a family evening out with some good spot prizes!

**Tauwhare
Winter Fair**

**Pukeko
Preschool**

Friday 8th JULY 5-9PM
Tauwhare Hall, 1158 Tauwhare Road

An evening of shopping, socialising and fun!

- Plenty of stalls (foods, gifts, crafts etc.)
- Sausage Sizzle, Raffles and Spot Prizes

Adults: Pre-purchased tickets \$5 with free door raffle entry (contact 824 0860)
OR \$5 entry only at door. Kids: \$2 entry at door with FREE balloon & face painting.
Sorry No EFTPOS Facilities - Cash or cheque only.

www.pukekopreschool.org.nz



EUREKA BADMINTON CLUB



JUNIOR CLUB NEWS

Our badminton season is well underway and it is great to see so many junior players coming each Wednesday. We had our first Yankee tournament of the season and the winners were; Bronwyn McNally, Amber McNally, Dan and Brandon Vink.

We had fun in the holidays with children challenging their parents and of course the children showing their superior skills on the courts! There has been interest expressed by adults to play, so come down to Matangi Hall around 7.15pm to play and we can see if the interest develops.

Junior Badminton is held each Wednesday at 6pm until 7.30pm, members welcome. For more information contact Trisha Bengé 829 5531



MARKET PLACE

HOUSE FOR RENT

Morrinsville/Cobham Drive. Tidy 3 Bedroom family home with Double Garage, conservatory, Heat Pump, Dishwasher, Fully Insulated and Fenced. No smokers or dogs. Close to David St School. References needed. \$280 per week. Available from 7th June 2011. Enquires Phone 07 824 1037



EUREKA EXPRESS

ADVERTISING RATES		CONTACTS - Gail or Gayle	
Classified Advertisements	Free	Gail Mayall (Editor)	Gayle Orr (Treasurer)
Small Business Advertisements	\$10 / month	70 Eureka Road	1130 SH26
• x 10 insertions	\$80 / year	Ph 8241 788	R D 6, HAMILTON 3206
One Third Page Advertisement	\$15 / month	Fax 8241 028	Ph 8241 713
• x 10 insertions	\$120 / year	e-mail:	Fax -
One Half Page Advertisement	\$20 / month	editor@eurekaexpress.co.nz	e-mail: gorr@extra.co.nz
• x 10 insertions	\$180 / year	gailandbarry@allinshot.co.nz	

2011 Scout Jamboree



Hi my name is Camden Wright. You may remember me from an earlier article last year about my fundraising for the 2011 Scout Jamboree. Now I have finally found some time to write about how the huge event went. I want to thank the community for your support and helping me to get to the Jamboree. This year was one of the biggest Jamborees ever held in New Zealand with over 4,000 scouts and several thousand leaders and other helpers. Scouts came to Mystery Creek from all over New Zealand and Australia; there were also troops from Cook Islands and Samoa. This made badge swapping very fun.

The event went for 10 days from the end of December 2010 to the first week of January 2011. Activities were held on site at Mystery Creek and also off site all around the greater Waikato area. Most individual Scout troops had around 30 scouts and leaders. The scouts were put into patrols of about six people. My troop is Hillcrest and this year our nickname was the Cow-A-Sockies. Our

mascot was a cow wearing Waikato socks and a motor bike seat. There was a competition going on between the troops on who had the best gateway into their campsite. Hillcrest's was made out of bamboo and lots of rope with our sign on top.

Our daily routine included cooking our own meals and keeping our camp site clean and tidy. We had to get our daily rations from the quartermaster store everyday.

The Scout troops were divided into three teams. The teams were called the Xtreme, Xcite and Xplore. Some of the activities we did were Xhaust, at the go-cart track, and Xperience, which was set up like a military training camp assault course. One of the offsite activities I did was a great race around Cambridge. This involved reading instructions, following maps and identifying clues which had us running around Cambridge looking for our final destination. I also went caving and abseiling at Adventure Waikato.

On our 'rest' days we would stay at Mystery Creek and could ride motor cross bikes, go on a flying fox that went over the Waikato River, rock climb, and make lots of crafts such as tie dying. Badge swapping with other scouts from around the country was also a big part of the occasion. On New Years Eve we had a massive party with lots of music and performances.



This year we were fortunate enough to have sun ever day and there was no virus spread around like at the last Jamboree. Jamboree was an awesome experience and I can't wait to return and help at the next one.

TAUWHARE INDOOR BOWLS

Congratulations to Andrew McNally and daughter Clare for their selection to play in the Waikato Development Squad for the Membership Trophy at Taupo on 21st May.

The Devon Art Cup challenge by Tatuani results in a loss to the Matangi / Tauwhare Team.

Sadly Tauwhare recorded a loss against Matangi in the annual Burnside Trophy Challenge. Eastern Waikato's Moore Cup match against Morrinsville resulted in a draw. J. Hooper, A. McNally and I Billings were in the team. Andrew McNally qualified to play in the post section of the Eastern Singles - well done.

All of our junior members Clare, Bronwyn and Amber McNally and Cameron and Melita Bargh played in the Waikato Junior Singles Championship. It was great to see them enter a more serious competition. Amber qualified to play in the post section - well done.

And now away from the bowls subject. Congratulations to two of our members who have reached milestones in the marriage realm.

- Ian and Alison Spencer - Golden Wedding Anniversary 13th May and
- Nick and Maria Stolwyk - Ruby Wedding Anniversary 22nd May.

Results:

21 April 2011

Leads and Twos

- Winners E Silvester, J Paton
- Runners Up E Porter, D Miller

Skips and Threes

- Winners I Spencer, E Morris
- Runners Up B Meads, J Cottle

28 April 2011 - Club Night

- Winners B Meads, W Silvester, K Williams
- Runners Up Andrew McNally, N Woodcock, H Bargh

4 May 2011 - Rinks Championship

- Winners A McNally, G Mayall, J Paton
- Runners Up L Grieveson, D Appleton, Glenda Goodare

12 May 2011 - Club Night

- Winners E Morris, J Cottle, K Williams
- Runners Up A McNally, D Appleton, N Stolwyk

Up & Coming Events:

- 2 June 2011 Club Night
- 9 June 2011 Esme Pope Memorial (Handicap Singles)
- 16 June 2011 Club Night (Progressive)
- 23 June 2011 Open Singles (7pm Start) Four games - qualifying
- 30 June 2011 Club Night
- 7 July 2011 Mens and Ladies Singles (7pm Start) - Four games - qualifying

New players and visitors are always welcome.

Tauwhare Hall - Thursday nights 7:30pm

For enquiries and information phone Robin Bargh 07 824 1819

Robin Bargh

P.S. - Get well wishes to our Patron Ian Spencer who has been unwell

IN YOUR GARDEN



What an incredible autumn we are having, I can't believe it's almost June and I am still picking beans. Unfortunately we all know that it cannot last.

Rake leaves for the compost, tidy up errant weed growth. Planting of deciduous trees is in full swing this month, but delay planting if the soil is too wet. Make sure you get garlic planted before the shortest day.

Plant tulips. Tulips hail from cold climate places, so for best results in milder climates trick them by chilling them in a paper bag in your fridge for 6-8 weeks. The best time to plant tulips is now till late autumn.

Shift trees. Now is a good time to move trees and shrubs, since they're in a dormant growth periods. If you've planted something in a spot that is too wet, too windy, too cramped or too boggy for it, then take it for a walk.

Save tender plants from frost. Young citrus, subtropical plants, coprosmos, pukas and palms all need covering. Frost cloth is easy to find at garden centers or hardware stores.

Break up clay now by digging in compost before winter sets in and the worms will do the rest.

Tie up plants while they're leaf free. Once deciduous trees and climbers have shed their leaves you can get a better idea of their branch structure, and can train them up walls, supports and pergolas.

Plant daffodil bulbs for cheerful spring colour.

Raise containers on wooden decks to avoid wet feet and risk rotting your deck.

Come mid-winter you will want to get into cutting and shaping of roses and many deciduous trees and shrubs. So prepare now. If your tools are dirty, clean them, if they are blunt, get them sharpened, if springs are stiff, oil them now before pruning day arrives.

Plant illies now in a sunny spot or in a pot and they will flower brilliantly in early summer.

Veggie garden tasks: Sow or plant lettuce, ice-berg is probably the best for this time of the year. Mound up leeks, pile soil around the stems. Harvest yams, leave them in the ground until the frosts kill off the foliage, then dig them, brush clean, and store in paper bags.

Sow spring onions, in bunches is better than straight line. Check stored pumpkins, onions and garlic for decay and use first the ones that look as if they won't last the distance. Sow broad beans, even in chilly conditions they will pop up in 14 days. Sow in blocks for easier staking later.

How to tackle slippery paths and decks as winter sets in: Pour 4 cups of white vinegar into half a bucket of warm water, add tsp of detergent, brush this onto paths or deck, leave for at least 30mins then hose off. The acid in the vinegar eats away at the slime and mould.

Happy gardening, Jennifer



MILK

MILK - THE COMPLETE FOOD



Milk is often referred to as 'the complete food'. Milk needs to be included in the diet because it features in almost all the major food groups which the body needs every day. Milk and milk products – butter, cheese and yoghurt – are extremely valuable sources of protein. They also contain Vitamins A and D and minerals, especially bone building calcium.

Milk is very easy to digest, which is the reason that we give it to babies and that milkshakes or milk puddings is such an excellent food for an upset stomach.

One pint per day is recommended for all age groups. Children and babies need milk for growing strong healthy bones and teeth. Adolescents and adults need milk for maintaining strong healthy bones and teeth. Milk can be taken in the form of drinks, soups, puddings or as yoghurt, a highly nutritious form of milk. Cheese also will contribute to your milk and calcium intake, 25grams of hard cheese is equivalent to about 1/3 pint of milk.

PROTEINS:

Proteins perform two important functions in the body. First, proteins are used to form the basic framework – bones, teeth, muscles, skin, hair and nails. Children need more protein while bones and teeth are being formed. Adults need protein to repair worn-out tissues. Second, protein is needed to produce heat and energy and to regulate bodily functions such as supplies of enzymes, hormones and food digestion.

Proteins are the building blocks for our bodies and can be found in milk, cheese, meat, nuts, fish and cereals.

MILK IN SCHOOLS:

When Colin and I were at primary school there was a scheme provided by the Government where students could have daily a free bottle of milk. They were small glass bottles and it ensured each child had access daily to milk. At my school we were also offered a hot milo in the winter (the good old days).

There is a lot we can learn from the past, the emphasis was on good strong, loving, family units, after all, the way we treat our children, food and thoughts, decides the future of our beautiful country. Lets all build beautiful loving, caring, positive families and **MAKE THE WORLD A BETTER PLACE.**

CHERYL MCFARLANE



LADIES A PLATE

Anzac Slice and Biscuits

These are enjoyed all year in our family

Anzac Slice

1 Cup Rolled Oats
½ teasp mixed spice
½ cup desiccated coconut
2 tblsp golden syrup
½ teasp bicarbonate soda

1 cup Plain Flour
1 cup brown sugar
125g butter chopped
2 tblsp water

1. Combine oats, sifted flour and mixed spice, sugar and coconut in a large bowl; mix well
2. Combine butter, golden syrup and water in a medium pan; stir over low heat, without boiling, until butter is melted. Bring to boil, remove from heat stir in soda.
3. Add syrup mixture to dry ingredients in bowl; mix well.
4. Grease a 20cmx20cm lamington pan; line base and two opposite sides with baking paper extending paper 5cm above edge of pan. Press oat mixture into pan.
5. Cook in a slow oven 160 for about 35 minutes or until cooked when tested. Cool slice in pan for 5 mins transfer to wire rack to cool.
6. Cut slice into squares

Anzac Biscuits

1. Prepare quantity of mixture as in Step 1 of Anzac slice, adding an extra ¼ cup desiccated coconut.
2. Proceed with steps 2 and 3
3. Spoon heaped teaspoons of mixture, 5cm apart, onto greased oven trays.
4. Cook in a slow oven 150 for about 20 minutes, or until lightly browned. Loosen biscuits from trays while warm; cool on trays



JBVisserVets Monthly News

Nitrate Poisoning

With the temperatures being warm still and all the overcast weather at the same time we thought it would be rather important to talk about Nitrate Poisoning. Also all the testing we have done this week has been in the highly dangerous do not feed category.

Something to consider if feeding crops such as sorghum, new sorghum crops, turnip leaves, oats and new grass paddocks, especially short rotation Italian ryegrasses. Climatic conditions which predispose to high plant nitrate levels are: drought (nitrate builds up in and around roots of plant) followed by rain (sudden uptake of nutrients and growth spurt of plant) and also: cloudy weather with otherwise good growing conditions.

Nitrate accumulates from the base up so the base is always more toxic than the leaf.

How long does it take for Nitrate Levels to Drop?

The extra nitrate in the plant has to be converted to plant material which occurs during photosynthesis when the sun is out. It takes a lot of new plant material to drop the levels even a small amount—it will happen over weeks not in a few days. High levels will remain high for some time.

Crops and grass with high levels can be fed if carefully grazed e.g. only grazed for an hour per day and only after they have been fed something else.

Graze in the early afternoon of a very sunny day (if you can) as the sunlight helps convert the accumulated nitrate into plant tissue.

Does Baling Or Ensiling Reduce Nitrate Levels In Feeds?

Ensiling may reduce nitrate concentrations under some conditions. However, this cannot be relied upon to always ensure lower nitrate levels. Crops ensiled with high soluble sugar content (e.g. cereal grains) have a rapid fermentation process. This rapid fermentation does not promote degradation of nitrate during the ensiling. Checking silage nitrate levels when the pit is being filled usually provides an accurate indication of what the nitrate level will be later on.

Curing and baling will not reduce nitrate levels. In fact, if round bale greenfeed, is baled too moist (18-20% moisture) and heats the problem can become worse. The nitrate present in the feed may be converted to nitrites by the microbial action that causes heating. Nitrites in a feed are ten times more toxic than nitrates.

Calves Scouring in Spring

Vaccinate your cows in winter

It seems a bit early in the season to discuss calf scours but it's not. To prevent calf scours you have to act before they are born.

Calf scours remains one of the most widespread diseases affecting young calves, and will affect virtually every dairy or beef unit that rears calves at some time. Severe outbreaks are costly and place a significant stress on farmers and family, at an already busy time of the year. It can kill up to a third of infected calves. Calves that recover may never perform as well as non-affected animals.

Calf scours may be infectious or nutritional in origin.

Nutritional causes of scours include:

- changes in milk composition,
- changes in amount of feed.



0800 VISSERVETS (847 737)

47 Lorne Street Morrinsville
161 Morrinsville Road Newstead

T 07 889 0414

F 07 889 0415

W www.jbvisservets.co.nz

E jbvisservets@paradise.net.nz

JBVisserVets Monthly News

Infectious scours are generally caused by:

- Rotavirus,
- Cryptosporidia,
- Coronavirus,
- Bacteria (Salmonella or E.coli).

The best economical solution for calf scours is preventative vaccination. Rotavec Corona protects calves against infectious scours.

Adult cows are vaccinated 4-12 weeks prior to calving, enabling high antibodies in the colostrum fed to calves when born. This means the whole herd can be vaccinated at one time.

Calves must receive adequate colostrum (2-3 litres) within the first 6 hours after birth. To ensure that the disease challenge on the farm is kept to a minimum it is important all cows in the herd are vaccinated and that good hygiene is maintained in calf housing and feeding.

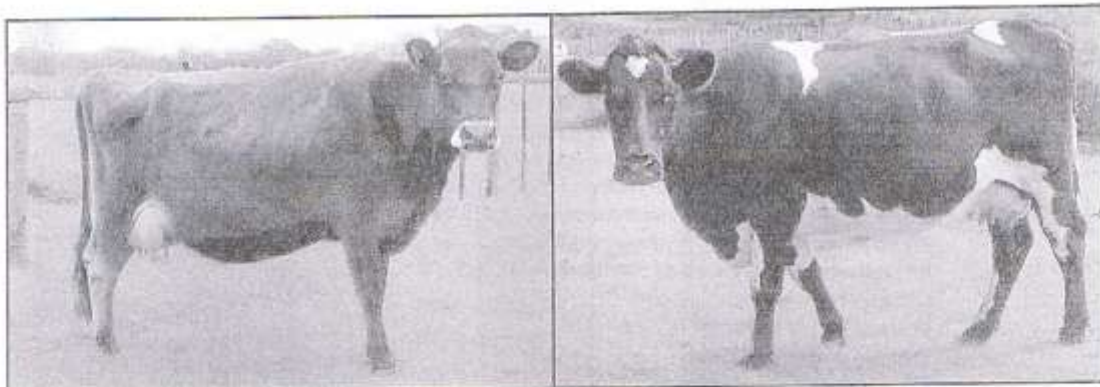
If you have a significant problem with scouring calves then this will help. Give us a call if you are interested and we can customise a plan for you.

Ensure cows achieve a BCS 5.0-5.5 at calving.

Cows need to be maintaining or gaining body condition during the dry period to ensure they calve in the best condition for high reproductive performance. A few points to consider:

- > Test supplementary feeds for nutritional value (especially hay and silage) to ensure they are suitable for feeding to dry cows,
- > Ensure that all cows in the group have equal access to supplements,
- > Separate thin cows at drying off and feed them differentially to achieve their respective condition targets,
- > Monitor and record the condition score of your herd throughout the dry period. After drying off there may be a large range of condition scores within the herd that demands separate mobs, and differential feeding to close the condition score gap from different groups.
- > Manage cows so to tighten the variation in BCS, 10% below 5.0 and 10% above 5.5%.

If you need advice about feeding supplements and about condition scoring your herd we are happy to help you out. (source incalf)

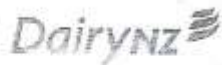


**JBVISSER
VETS**
For your livestock & pets

0800 VISSERVETS (847 737)
47 Lorne Street Morrinsville
161 Morrinsville Road Newstead

T 07 889 0414
F 07 889 0415

www.jbvisservets.co.nz
E jbvisservets@paradise.net.nz



It's Official

The amazing Autumn we have had has been quantified and put in perspective at DairyNZ's Scott Farm on Vale Road. The month of April saw the highest average pasture growth rates for that month since pasture cuts have been taken. And a record by quite some margin. The previous record for the month of April was 49 Kg DM/Ha/Day but this April saw a massive 60 Kg DM/Ha/Day average. Have a guess what the previous 2 years April growth rates were? 8 and 4!

Amazingly for some there is almost too much feed. Whole farm average pasture covers of 2,700 have been experienced by some. Can you have too much? Certainly not from a feed bank point of but in terms of maximising winter and early spring growth and pasture quality I say yes you can. To have an average pasture cover of 2,700 you have to have some paddocks well over 4,000 Kg Dm/Ha and once a frost or two come along those paddocks will really struggle to recover after grazing out hard. I can hear some of you saying "give us a break and just enjoy what the Autumn has given us". I agree and will pull my head in on this one after making that one point.



Stock Sense Calving Workshops

Calving is looming and now is the time to get prepared.

To help get ready for this calving, DairyNZ is partnering with local vets to run a series of interactive, StockSense calving workshops targeting the skills required for this busy time of the year.

Taking place at 15 locations nationwide, the workshops will be held from June 7-July 5 and are designed to prepare your team in readiness for calving.

These workshops are the first in a series of StockSense workshops designed to promote good stockmanship and animal husbandry practices; the cornerstone of any profitable dairying enterprise.

Presented by members of the DairyNZ Animal Husbandry Extension Specialist team, the sessions will provide practical tips and skills training that will help your team improve performance at calving time.

To maximise value across your team, tailored workshops will be structured to suit both management and junior staff levels.

Schedule:

Date:	Town:
7 June 2011	Matamata
8 June 2011	Ngatea
7 June 2011	Taupo
8 June 2011	Te Puke
9 June 2011	Putaruru
14 June 2011	Te Awamutu

Managers

The management level workshop will cover two distinct areas – improved staff management and humane slaughter.

Improved communication, training and management of staff at calving time is vital. During the workshop, managers will examine and develop management resources for use on their own farms.

Participants will have an opportunity to share their own experiences to learn practical cost-effective solutions for better calving management.

Humane slaughter is a necessary, skill required on farms. Participants will receive training in the safe, quick and effective dispatch of stock on-farm – including the use of captive bolts.

Staff

Sessions for junior staff and staff new to dairying will run in parallel with the management workshop.

During this session, participants will learn a raft of safe, practical stockmanship tips and techniques, including:

- Observation of cows pre-calving and recognising signs of imminent calving
- Calving – what's normal? What's not? And when to call for backup
- Care of the newborn calf – clearing airways, treating navels, mothering up cows and calves
- Recording births and transporting calves to the shed.

After the split sessions, the whole group will share the knowledge gained and take part in a team exercise challenge.

The workshops are free for levy paying farmers however due to the practical nature of these workshops, numbers are limited and registration is essential. Register at www.dairynz.co.nz

Phil Irvine
DairyNZ Consulting Officer
027 4839820



RAINFALL

	April 2011	Year to 30 th April
Total (mm)	104	463
Average (1994-2011)	94	326
Difference	+10	+137

Rainfall recorded on 14days



Managers

The management level workshop will cover two distinct areas – improved staff management and humane slaughter.

Improved communication, training and management of staff at calving time is vital. During the workshop, managers will examine and develop management resources for use on their own farms.

Participants will have an opportunity to share their own experiences to learn practical cost-effective solutions for better calving management.

Humane slaughter is a necessary, skill required on farms. Participants will receive training in the safe, quick and effective dispatch of stock on-farm – including the use of captive bolts.

Staff

Sessions for junior staff and staff new to dairying will run in parallel with the management workshop.

During this session, participants will learn a raft of safe, practical stockmanship tips and techniques, including:

- Observation of cows pre-calving and recognising signs of imminent calving
- Calving – what's normal? What's not? And when to call for backup
- Care of the newborn calf – clearing airways, treating navels, mothering up cows and calves
- Recording births and transporting calves to the shed.

After the split sessions, the whole group will share the knowledge gained and take part in a team exercise challenge.

The workshops are free for levy paying farmers however due to the practical nature of these workshops, numbers are limited and registration is essential. Register at www.dairynz.co.nz

Phil Irvine
DairyNZ Consulting Officer
027 4839820



RAINFALL

	April 2011	Year to 30 th April
Total (mm)	104	463
Average (1994-2011)	94	326
Difference	+10	+137

Rainfall recorded on 14days



THE BEAUTYHOUSE

Personalised, friendly service

dermatech

Oasis beauty

Do you need some pampering? All facial treatments are \$40!

Book now for a Glycolic Facial and pay only \$25 for your first treatment – your skin will look and feel lighter, brighter, younger & fresher – this is a very popular treatment and you won't be disappointed!

Bella M.
PURE NATURAL COSMETICS

NZ made gorgeous 100% natural mineral cosmetics at an affordable price. Book for a no obligation free trial. Spend \$100 or more on Skincare or Cosmetics during June and receive a voucher for \$10 off your next beauty treatment.

Time to enhance your natural features??? Eye-lash/brow tinting and brow shaping only \$30!!!

Gift vouchers & Gifts for purchases (Only Polishes, Cuccio Body Products, Skin Deep)
Good honest value for money with exceptional service and help with any issues from
skincare to hair removal. (Eft-Pos available)

Tauwhare Village, 10926 Tauwhare Road

Ph: Jacqueline 8240950 or 0274 853985 Email: thebeautyhouse@xtra.co.nz



The Beauty House



**** NOW IN EUREKA ****

Plus MORRINSVILLE & HAMILTON

2011 CLASS TIMETABLE

MON	7.30 - 8.30pm	EUREKA - Eureka Hall, SH26,
TUES	7.30-8.30pm	HAMILTON - St Peters Hall, 51 Victoria St, CBD
WED	6.00-7.00pm	MORRINSVILLE – Senior Citizen Hall, Canada St
WED	7.30 - 8.30pm	EUREKA - Eureka Hall, SH26,
FRI	6.00 - 7.00pm	MORRINSVILLE - Methodist Church, Thames St

PRICES

Casual Class	\$10
Student / Pension	\$6
Concession Cards:-	
(For 10 Classes)	\$70 (3 months)
(For 20 Classes)	\$120 (6 months)
Family Pass	\$20
2 x Adults & 2 x Children (under 14 yrs)	

FIRST TIME TO CLASS ONLY \$4

Join Zumba Instructors - Megan Hyland, Sarah Rasmussen, Marcla Davie

Ph: 021 905335 (Megan) 027 3871333 (Sarah) Email: megan.zumba@xtra.co.nz

Absolute Skin Therapy

An Institut' DERMEd Spa Partner



Prepare for winter Save \$\$

with a microdermabrasion exfoliation facial. As the weather gets colder more cells dry out and accumulate on the skins surface. If the old cells remain on the surface and build up, they contribute to a flat, dull appearance and blemishes. Cells move from the base of the epidermis up to the top in a 30-day cycle. Microdermabrasion can correct rough skin texture and acne. Exfoliation also helps improve the penetration of serums and other skin care products.
Now Only \$45



Brilliant New Natural Skin Care Products

From The Jojoba Company. Jojoba has long been recognised for its unique qualities. It soothes, nourishes and moisturises skin like no other substance on earth. Jojoba is an excellent anti-aging treatment. Exceptionally well priced from as little as \$24.90.

Save More Than \$160!

Call us now and ask about joining our

Queen of Referrals Club

For every friend you refer, YOU get to enjoy huge discounts on selected treatments!

Experienced, Professional, Helpful Advice

My philosophy is to help educate you about the best possible skin care solutions so YOU can achieve your desired results - Nelly
284 Tahuroa Road Tauwhare Tele 8240 762 www.absoluteskintherapy.co.nz

Eureka Precast Concrete

117 Hooper Road

**Manufacturer of the following
Farm and Small Block Concrete Products**

Palm Kernel Feeding Troughs

Feeding Pad Troughs

1,000 Litre Oblong Water Troughs

200 Litre Round Water Troughs

Offal Hole Lids

Septic Tank Replacement Lids

Plus Much More

Ph. Ian Manning – 0274 961902

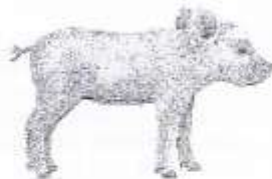
824 1988 a.h.

JBVisserVets

The team of **JBVisserVets** pride themselves on providing you top quality care for all large animals. Be it dairy, beef or lifestyle, your animals are in the best of care. Customer focused to the highest of quality, **JBVisserVets** look forward to meeting you today.

0800 VISSER

47 Lorne St Morrinsville / 161 Morrinsville Road Newstead



**JBVISSE
VETS**
07 889 0414

INNOVATIVE



870 SH 26 Newstead
 Brent 0272 432 011
 mcfarlans@farmside.co.nz

Ph 824 1186
 Brent 0272 432 011

- Hay / Haylage—round, square, conventional
- Grass & Maize Silage
- Full ground cultivation
- Maize and Crop Planting
- Land lease & Share Cropping
- Spraying
- Truck & Trailer Hire
- Digger
- Metal injected sub-soil irrigation



"Helping farmers feed their cows"



Ctas NZ Ltd

www.ctas.co.nz



Specialists in:

- Professional systems online and PC development
- Online internet based and PC/Lan Systems development
- Business Websites – FREE development (conditions apply)
Check out <http://ctas.co.nz/Webs/Home.aspx> to see more.
- Alert-Me - Online TXT and Email reminder system. Ideal for everything, from birthdays, appointments, sporting, gardening, TAX, WOF, Registration and many more. One off or recurring. Free for home use. Go to www.Alert-Me.co.nz
- YouTXT - Operate your own TXT shortcode using our TXT system for free. Go to www.youtxt.co.nz
- FlightCheck - Check your Flight details, real time from your Mobile Phone. TXT Flight number to 8808. Txt's cost 50c

Phone: 07 824 1025
 Email: grant@ctas.co.nz










Newstead Veterinary Services
 161 Morrinsville Rd (SH26)
 Phone (07) 856-4522 Fax (07) 8569487
 email: admin@newsteadvets.co.nz
www.newsteadvets.co.nz

We offer a comprehensive range of services for dogs, cats and small pets.

- Puppy pre-school classes
- Comprehensive range of pet care products and pet food
- Nutritional advice with onsite pet dietician and free weight clinic
- Cremation with a local pet crematorium, with optional return of ashes
- Isolation ward
- NZVA Microchipping Accredited Practice
- MAF Accredited vets for pet export certificates to Australia
- Ample parking

We believe that pets are important members of your family.

SPYVES PANEL SHOP
for all
Panel and paint requirements



**AUTOROBOT CHASSIS
and
ALIGNMENT MACHINE**

Ph Ron or Karen 8241 890
Fax 8241 892
Mob 027 280 0346

ROSS PUMPS

&
Filtration Specialists Ltd



Servicing and installation
On all types of pumps
Full Water Treatment
Service Available

DAREN ROSS

Tel. 8241 726 or 0274 346 571
Fax. 8241 879
Email: rosspumps@xtra.co.nz

COMPUTERISED BULK SPREADERS LTD

For all your spreading needs



FERTILIZER, LIME, UREA

Top Service,
Competitive Rates

Roger Springett
103 Hooper Road Eureka
Ph. 8241 175
Mob. 0274 970 413

EUREKA POULTRY FARM

13 Hooper Road
Ph 824 1762
NIC & MARIA STOLWYK
Hobby Hens



Young pullets from
5 weeks to point-of-lay
Great for lifestylers
Bagged up chook manure
Hours Mon-Sat 8-6

Green Acres

Professional lawn and
Garden care service



Maurice Smith

For free no-obligation quote:
Ph: (07) 824 1948
Mobile: 0274 797 282
Fax: (07) 824 1947
Email: msmith@clear.net.nz
Ride-on mowing specialists
Give your lawn the perfect finish

IAN MANNING
REGISTERED DRAINLAYER



For all drainlaying work
New or alterations
Residential & Commercial
Blocked drains cleared
Maintenance
Prompt service

Tel. 8241 988
Fax. 8241 989
Mob. 0274 961 902

Kelvin Lalich Builders Ltd

- New homes
- Alterations
- Large & Small
Commercial Buildings
- Chicken Sheds

Phone 889 3951 (bus)
889 3975 (a/hrs)



**"Building
with Pride"**

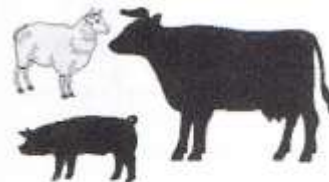
FRESH
APPLES & PEARS
STONEFRUIT IN SEASON



NEWSTEAD ORCHARD
552 Morrinsville Road

OPEN MON-SAT.
W J McMiken & Co
Morrinsville Road
Tel. 856 4478

TAUWHARE HOME KILLS LTD



Tauwhare Village
Owner Operators
Trevor & Leonie Brunton

On Farm Killing Service
All beef hung for 7 days
FREE OFFAL DISPOSAL

Ph 824 0880 all hours
Fax 824 0809
Mob 0274 757 215



Gayle Orr
 Spiritual Counsellor & Teacher
 Working with angels to relay
 Messages from loved ones
 Personal Readings
 Healing
 Spiritual Counselling
 Meditation & Relaxation Classes

**For a personal reading
 phone: 07 824 1713**

**Got A Leak?
 Save \$\$\$**
 Fix it yourself with
Feb Aquaseal Hyband
 the leak repair kit in a roll

- Easy to cut, mould and apply
- Instant watertight seal
- Lasting bond
- Wide range of uses

Available from 50mm to 450mm wide
 Stop leaks in roofs, hay barns,
 covered yards, milking sheds, cars,
 trucks and caravans
 Use for patch repairs and for flashings

To find out more..... call Debbie
 Ph 07-8241644 or 027-247 9367

CALF COVERS
 "Canvas, Jute, or satin
 lined for Calf Club"

I also manufacture horse covers, trailer covers or any other kind of cover you may want. Good quality, P.V.C. horse gear bags — can also be used for dive bags. Good quality at reasonable prices.

**Phone Narelle Pollock
 824 0736**



**CAMBRIDGE
 CARPET
 CLEANING**
Servicing the Waikato

Also

- ✓ Upholstery Cleaning and Protection
- ✓ Flood Restoration
- ✓ Stain Treatment
- ✓ Auto and Marine Work
- ✓ Window Cleaning
- ✓ Senior Citizens Rates

**Phone Grant on 0275 542 116
 Or 07 823 7031
 Locally Owned and Operated**

**Local builder
 Tauwhare Road resident
 Registered Tradesman**



Concrete work
 New homes
 Renovations
 Alterations
 Farm buildings
 Decks
 Fences
 Bathrooms
 Kitchens
 Roofing

Over 29 years building experience
 No job too big or too small

Craig Griffin Builders Limited
 Phone Mobile: 027 279 2682
 Phone/Fax After Hours: 824 1607
 Email: craigandjackiegriffin@ihug.co.nz

nzgardensheds
the best little sheds around

Your local garden shed supplier of
 NZ made, self assemble Garden Sheds
 (Zincalume or Colour Steel)

GET IN TOUCH...

- * EASY ASSEMBLY
- * MADE TO LAST!

Waikato Shed Company
 218 Hunter Road, Eureka,
 Hamilton
 Phone: 07 824 1045
 Email: sales@nzgardensheds.co.nz

ENQUIRE FOR A BROCHURE NOW

**Trusler
 Contract
 Lawn Mowing**
 Fast, efficient, reliable



Free, no-obligation quote and advice
 Lex Trusler
 Ph: 824 1906 Mob: 027 221 0861
 Fax: 824 1907
 Lifestyle blocks—sections
 Road verges—horse studs
 20 yrs + experience

Scanlan & Jones
 Specialists in:

- ✓ Wood Fire Sales
- ✓ Wood Fire Installation/Repairs
- ✓ Hearth Manufacturers
- ✓ Outdoor Fire Installations
- ✓ Chimney Sweeping
- ✓ Heat Transfer Kits — Sales & Installation



Registered Installers
 Over 17 Years Experience
 Free Quotes

**Contact Justin & Brendon
 0274 834 267 (day)**
 A/Hrs: 07 824 0950 Fax 07 824 0951
 Email: scanlan.jones@xtra.co.nz

Member of New Zealand Heating Association 

HAIRFIELDS
 HAIR DESIGN
 95 HOOPER ROAD
 Sharon Laurent

Full salon facility in Eureka
 Total hair care professional
 with many years experience
 Agent for Nutrimetics also



Open Tuesday to Friday
 Late nights Tues/Thurs
 Tel. 824 1712 or 027 280 5978



EUREKA MOTORS

COLIN DUNCAN (PROP). SH 26, OPPOSITE EUREKA HALL

**WE ARE EQUIPPED AND SKILLED TO CARRY OUT
ANY REPAIRS NEEDED ON ALL TYPES OF VEHICLES**

Our experienced workshop staff guarantee to provide quality service
to all our customers

If we don't have the right part in stock we'll get it for you straight away
If you need some work done, why not give us a try?

OPEN MONDAY - FRIDAY 7.30am - 6.00pm

SATURDAY 8.00am - Noon

Ph 8241 773 Fax 8241 073

WALLING CONTRACTING LTD **'YOUR PROVEN LOCAL ONE STOP CONTRACTORS'**

WE CAN OFFER YOU THE FOLLOWING SERVICES:



- *Grass Silage
- *Ploughing
- *Rotary Hoeing
- *Ripping
- *Undersowing
- *Baling & Wrapping
- *Digger (12 Ton)
- *Grass Crop Sales

- *Maize Silage
- *Power Harrowing
- *Discing
- *Maize Planting
- *Roller Drilling
- *Power Harrow/Seedbox
- *Shavings & Sawdust
- *Maize Crop Sales



**FOR ALL YOUR CONTRACTING NEEDS
PHONE LEN OR BECKY**

ON

824 0894 (anytime)

Farm & Lifestyle Block Sheds With More Useable Space, That Last Longer & Require Less Maintenance.

While from the outside some sheds may look the same, when you step inside one of our clear span steel sheds you will see that there are no unsightly web trusses or internal support poles taking up valuable space. You will appreciate that one of our custom designed steel sheds with a 50 year durability statement will actually cost you less over the buildings life & add value to your property.

We use materials that won't rot, twist or warp so you spend less time and money on repairs and maintenance. Factory applied finishes provide greater corrosion resistance and durability, with cladding & roofing available in a wide range of colours and profiles to suit every situation.



No internal support poles or web trusses mean clear lines, and you get to use all the space you paid for. No need to worry about driving into support poles in our sheds!

FREE, NO OBLIGATION DESIGN & QUOTE SERVICE

You don't pay a cent until you are completely happy with the design & ready to proceed



Our popular American Barns provide extra height in the centre section (ideal for boats or motorhomes) and are a great looking addition to lifestyle properties. The side modules can easily be divided off to be used as an office, rumpus room or accommodation unit.



GOING TO THE FIELDDAYS?

15th - 18th June 2011 sees the return of the annual National Fielddays at Mystery Creek.

We will be there just inside the entrance to the main pavilion on site PA3. Stop in and have a chat with us about how we can build the best shed for your needs.



Freephone **0800 555 147**
218 Hunter Road, Eureka
www.waikatosheds.co.nz

WAIKATO SHED
COMPANY ✓
great sheds, done right!
Hamilton • Taupo

How To Avoid Costly Yet Common Mistakes When Building Your New Shed

Find Out What Other Shed Companies May Not Tell You



Adjusting the bay widths on this shed used by a food distribution business reduced waste space between the trucks and increased valuable storage space.

It's disappointing when you discover that something you paid good money for turns out to be of poorer quality than expected. Perhaps due to inefficient & outdated design it doesn't exactly suit your needs or doesn't "measure up" in some areas. That's why we take time to custom design your ideal shed and only use high quality steel materials with best building practices.

Contact us to receive a copy of our **FREE** booklet packed full of information and advice that will save you time, money & stress. It will help you to compare building systems and materials to help you choose which is most suitable for you. We'll make sure you avoid costly mistakes and get a great shed, done right!

FULL DESIGN & BUILD OR KIT SET ONLY OPTIONS

Once we have custom designed the shed that best meets your needs, you can choose to build it yourself, or have our experienced builders complete it for you. The majority of kit components come cut to length with bolt holes pre-punched for accuracy. We are also happy to stand the frame only, leaving you to handle the cladding, roofing, door fitment etc. You have the flexibility to do as much (or as little) of the work as you are comfortable with.



Recently constructed 14 x 16 x 4.2m American Barn with ply & batten cladding on end wall and internal dividing wall. Built near Matamala, this shed utilises a partial clear span design to provide an unobstructed work shop area.

Our multi-purpose shed was a challenging build and Waikato Sheds did a first class job of it. Their attention to detail and quality of workmanship was really good. Nothing was too much trouble. //

Rob Waddell, Olympic Gold Medalist,
Americas Cup Sailor



FARM • INDUSTRIAL • LIFESTYLE



Freephone **0800 555 147**
218 Hunter Road, Eureka
www.waikatosheds.co.nz

WAIKATO SHED
COMPANY ✓
great sheds, done right!
Hamilton • Taupo